

Medicating Sheep and Goats



Jeff Semler
Extension Educator, AGNR
Washington County

Program Overview

- Identification
- Nutrition
- Health
- BioSecurity Practices



Reasons to Identify Livestock

- Management and Record Keeping
- Treatment
- Registrations
- Sale
- Cull



What are methods used to identify livestock?

Tagging

- Simple
- Inexpensive
- Semi Permanent
- Tamper Proof



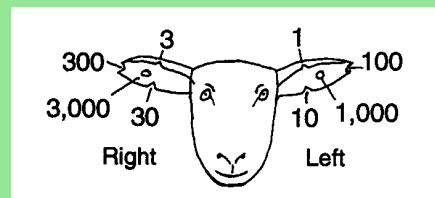
Brand or Tattoo

- Permanent (tattoo)
- Easy to read (paint brand)
- Inexpensive
- Quick
- Equipment is reusable



Ear Notching

- No renewable expense
- Quick
- Permanent



Nutrition: What makes a feed complete?

Essential Nutrients

- Water
 - Most important nutrient
 - Warm vs. Cool
- Energy
 - "fuel" for body
 - Maintains body temperature and produces muscular movement
- Protein
 - "Building Blocks" for body
 - Builds muscle tissue, blood, skin, skeleton, and promotes growth
- Minerals
 - Needed in small amounts
 - Toxicities in some animals
- Vitamins
 - Assist body in using other nutrients and in preventing diseases
 - 2 Kinds: Fat Soluble (A,D,E,K) and Water Soluble (B-Complex and C)

Digestive System

- Ruminant

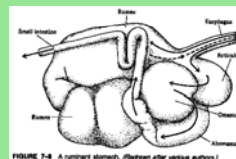
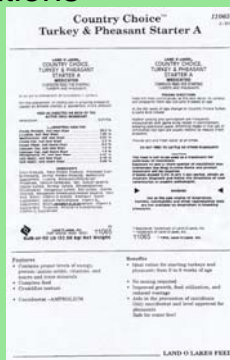


FIGURE 7-4 A ruminant stomach. (Illustrated after various authors.)

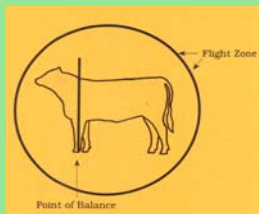
Feed Rations

- Read ingredients carefully
- Evaluate the proposals and benefits of the feed
- Quality of Feed
- Is it Palatable?
- Quality Feed Rep.



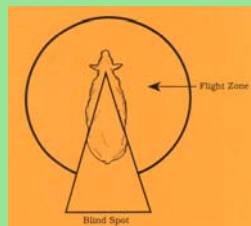
Health: Handling & Management

- Depends on temperament, size, and previous experiences - Animals have long memories.
- Instincts and habits include kicking, charging and/or running.
- Animals will be spooked by water puddles, shiny objects, flapping objects, other animals or people, and bright lights and shadows.
- Be aware and respect the animal.



Flight Zone

Blind Spot



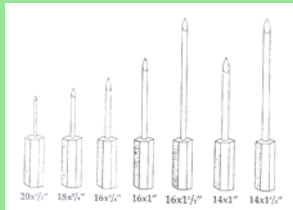
- Over the Counter (OTC)
- Prescription - Available only from a Veterinarian.
- Extra label - Only by direction of Veterinarian.
- Withdraw times.
- Veterinarian/Client relationship.

- Orally
- Topical
- Injectable (IM, SQ, IV)
 - Intramuscular
 - Subcutaneous
 - Intravenous

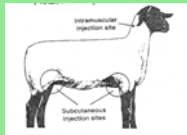


- Proper Animal ID
- Restrain the animal
- Read label directions
- Give SQ if OK
- Vary the injection site
- Records
- Needle-to-bottle
- Sterilized equipment
- Clean injection site
- High Value Cuts
- Dull, bent or barbed needles
- Needle disposal
- Needle Size

- Adjusted for size and injection method.
- SQ general rule
 - ~ 16-18 gauge
 - 1/2" - 3/4"
- IM general rule
 - ~ 16-18 gauge
 - 1" - 1 1/2"



- Dose
- Administration
- Route of administration
- Warnings
- Withdraw times
- Storage
- Expiration date



- SQ in loose flaps of skin of the flank and elbow.
- IM in neck region.
- No more than 5cc per injection site.



- Cannot be put in household or farm waste or recycle materials.
- Use containers specifically designed for Sharps.
- Or, use heavy plastic detergent or bleach bottles with screw on lids.
- Mark "Hazardous Materials" and contact the local hospital or Veterinarian office for disposal.



